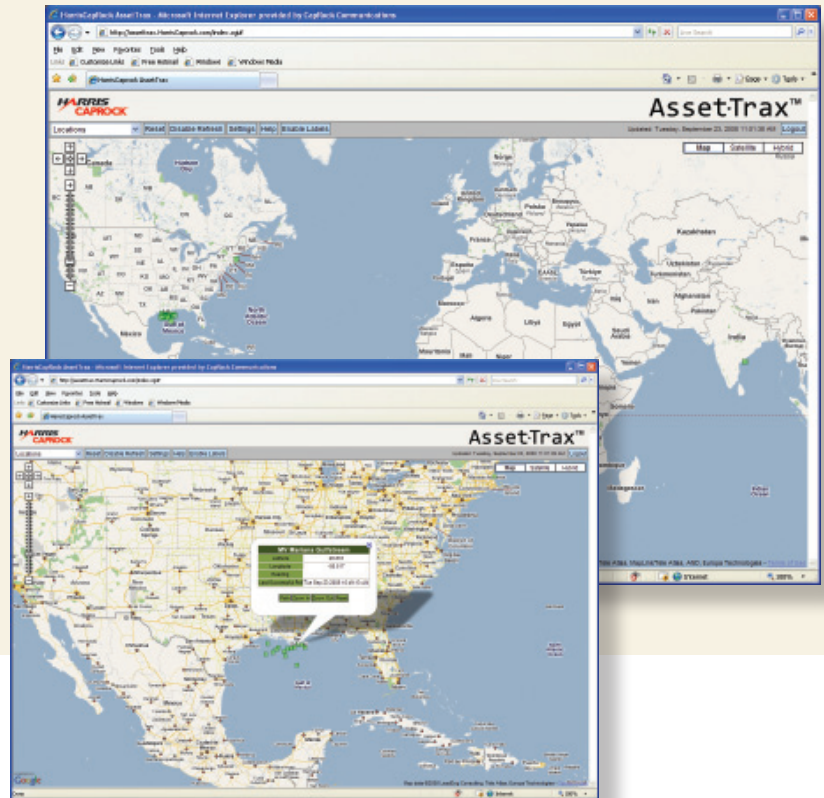


# AssetTrax™

[www.harriscaprock.com/assettrax](http://www.harriscaprock.com/assettrax)

Harris CapRock's map-based site tracking service, AssetTrax™, monitors the position and movement of critical assets around the world. Accessible at any time, from any Internet connection, AssetTrax provides both up-to-date and historic location information on assets equipped with Harris CapRock's VSAT solution.



## MONITORS POSITION AND MOVEMENT OF

### Energy assets

- > Offshore drilling rigs
- > Supply boats
- > Construction and repair vessels

### Maritime assets

- > Cargo ships
- > Freighters
- > Tankers
- > Container ships

## CAPABILITIES

- Determines specific asset location
- Tracks historical paths
- Displays heading data

## SERVICE FEATURES

- Web-based access
- Secure log-in

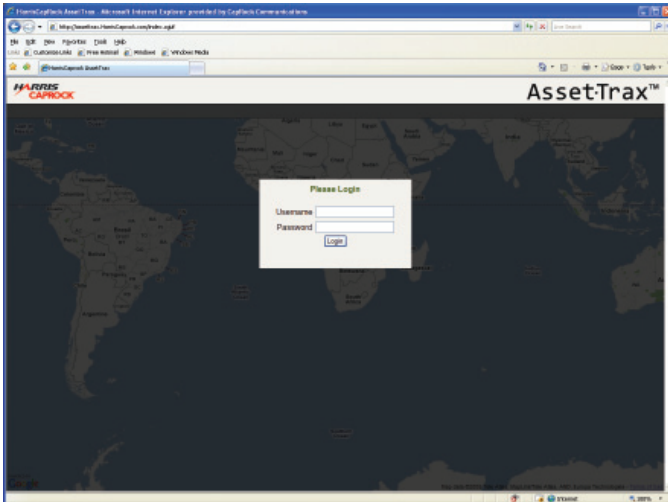
## BENEFITS

- Provides clear tracking of remote operations
- Enables more efficient resource allocation

# Asset·Trax™

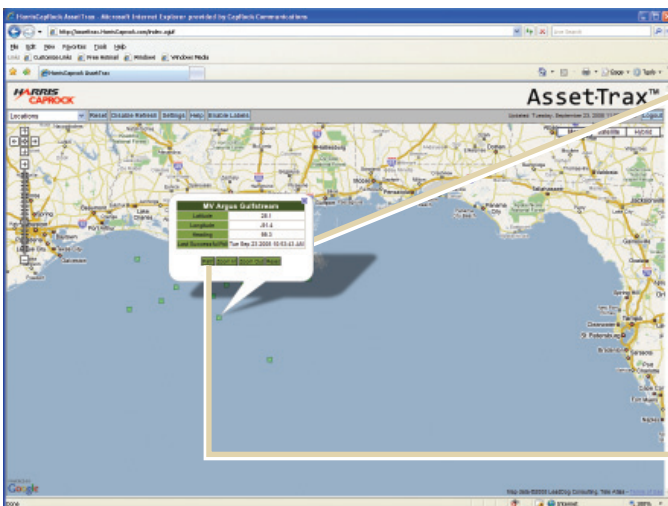
[www.harriscaprock.com/assettrax](http://www.harriscaprock.com/assettrax)

## AT-A-GLANCE FEATURES



### Secure log-in

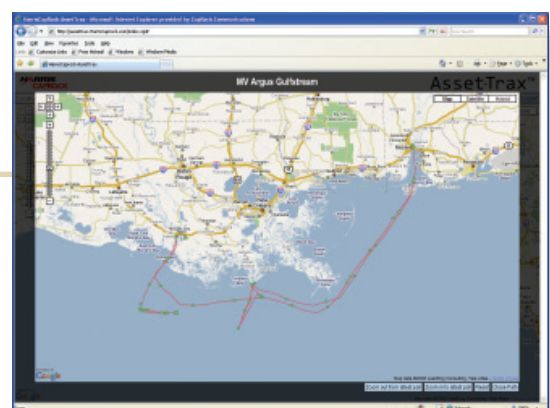
Accessible 24/7 from any Internet connection, ship operators and rig managers alike can retrieve site location information anytime, anywhere.



MV Argus Gulfstream	
Latitude	28.1
Longitude	-91.4
Heading	99.3
Last Successful Poll	Tue Sep 23 2008 10:53:43 AM
<a href="#">Path</a> <a href="#">Zoom In</a> <a href="#">Zoom Out</a> <a href="#">Reset</a>	

### Current site location

- > Latitude/longitude
- > Heading
- > Date/time of last recorded position
- > Poll results status



### Historic site path

- > Latitude/longitude
- > Movement within last 30 days
- > Date/time of each recorded position